

2-040 Quarter-Turn PrA L16

Tool or hand operable



Product Notes:

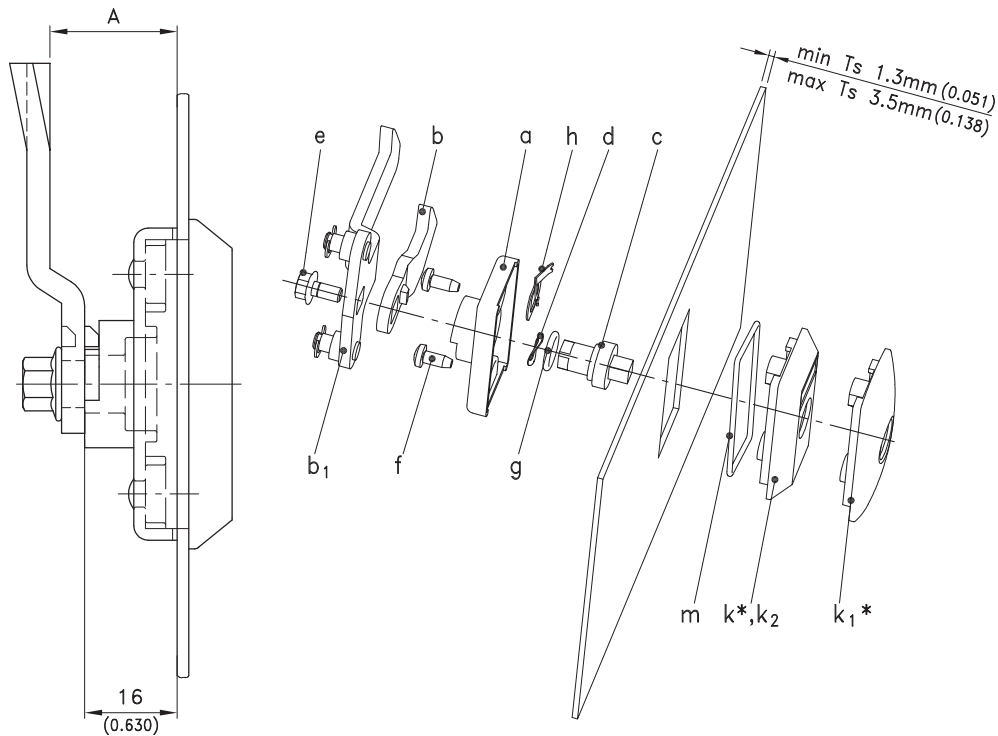
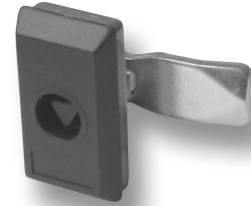
- For door thicknesses greater than 3.5mm, use longer screws (f)
- RH and LH application

NOTE: Dimension A is based on a 16mm measurement, not 18mm. Therefore, all cam heights are 2mm less. E.g. cam 200-0430 has an A dimension of 28mm.

NOTE: Min A dimension = 8mm

Material:

- **Rear plate:** Zinc Die, Untreated
- **Cam:** Steel, Zinc Plated
- **3-point cam:** Steel, Zinc Plated
- **Insert:** Depends on version
- **Wave washer:** Spring Steel, Zinc Plated
- **Serrated screw:** Steel, Zinc Plated
- **Countersunk head, tapping screw:** Steel, Zinc Plated
- **O-Ring:** Perbunan
- **Grounding clip:** Stainless Steel
- **Escutcheon, short complete:** PA, Black
- **Escutcheon, SOFTLINE:** PA, Black



	Part No.	See Page
a) Rear plate	207-2707.00-00016	
b) and b1) Cams (NOTE: For calculation see text top right)		01.101
c),d) and e) insert, complete (for wing and star knob: Please contact DIRAK)		01.98, 01.99
k) and f) Escutcheon, short complete	208-9306.00-00000	
k1) and f) Escutcheon, Softline complete	208-9307.00-00000	
k2) and f) Escutcheon, short double bit	208-9308.00-00000	
Optional:		
g) O-ring for insert	200-1001.00-00000	
m) O-ring for Escutcheon	208-1802.00-00000	
h) Grounding clip	208-1201.04-00000	
Cutout 50 x 25 Type A		03.07
* A longer escutcheon is also possible		03.20, 03.27
Cover for cutout		03.28